

Acta Crystallographica Section E

Structure Reports

Online

ISSN 1600-5368

1-(4-Methyl-1-naphthyl)ethanone

Yong-Hong Hu,* Xiao-Lei Zhao, Wen-Ge Yang, Jin-Feng Yao and Xiu-Tao Lu

College of Life Science and Pharmaceutical Engineering, Nanjing University of Technology, Ximofan Road No. 5 Nanjing, Nanjing 210009, People's Republic of China

Correspondence e-mail: hyh@njut.edu.cn

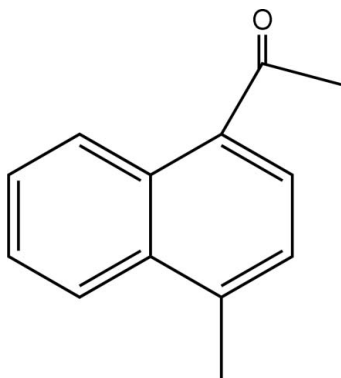
Received 28 October 2008; accepted 31 October 2008

Key indicators: single-crystal X-ray study; $T = 294$ K; mean $\sigma(\text{C}-\text{C}) = 0.005$ Å; R factor = 0.059; wR factor = 0.155; data-to-parameter ratio = 14.5.

In the molecule of the title compound, $\text{C}_{13}\text{H}_{12}\text{O}$, the two aromatic rings are oriented at a dihedral angle of 2.90 (3)°. An intramolecular $\text{C}-\text{H}\cdots\text{O}$ hydrogen bond results in the formation of a non-planar six-membered ring, which adopts an envelope conformation. In the crystal structure, intermolecular $\text{C}-\text{H}\cdots\text{O}$ hydrogen bonds link the molecules.

Related literature

For related structures, see: Dixon *et al.* (1981); Grummitt & Buck (1943); Merritt & Braun (1950). For bond-length data, see: Allen *et al.* (1987).



Experimental

Crystal data

$\text{C}_{13}\text{H}_{12}\text{O}$
 $M_r = 184.23$

Orthorhombic, *Pbca*
 $a = 15.449$ (3) Å

$b = 7.8290$ (16) Å
 $c = 16.755$ (3) Å
 $V = 2026.5$ (7) Å³
 $Z = 8$

Mo $K\alpha$ radiation
 $\mu = 0.07$ mm⁻¹
 $T = 294$ (2) K
 $0.30 \times 0.20 \times 0.10$ mm

Data collection

Enraf–Nonius CAD-4 diffractometer
 Absorption correction: ψ scan (North *et al.*, 1968)
 $T_{\min} = 0.978$, $T_{\max} = 0.993$
 1932 measured reflections

1846 independent reflections
 905 reflections with $I > 2\sigma(I)$
 $R_{\text{int}} = 0.000$
 3 standard reflections
 frequency: 120 min
 intensity decay: none

Refinement

$R[F^2 > 2\sigma(F^2)] = 0.059$
 $wR(F^2) = 0.155$
 $S = 1.01$
 1846 reflections

127 parameters
 H-atom parameters constrained
 $\Delta\rho_{\text{max}} = 0.14$ e Å⁻³
 $\Delta\rho_{\text{min}} = -0.16$ e Å⁻³

Table 1

Hydrogen-bond geometry (Å, °).

| $D-\text{H}\cdots A$ | $D-\text{H}$ | $\text{H}\cdots A$ | $D\cdots A$ | $D-\text{H}\cdots A$ |
|--|--------------|--------------------|-------------|----------------------|
| $\text{C}2-\text{H}2A\cdots\text{O}$ | 0.93 | 2.30 | 2.920 (4) | 124 |
| $\text{C}13-\text{H}13C\cdots\text{O}^i$ | 0.96 | 2.55 | 3.296 (4) | 135 |

Symmetry code: (i) $-x + \frac{3}{2}, y + \frac{1}{2}, z$.

Data collection: *CAD-4 Software* (Enraf–Nonius, 1989); cell refinement: *CAD-4 Software*; data reduction: *XCAD4* (Harms & Wocadlo, 1995); program(s) used to solve structure: *SHELXS97* (Sheldrick, 2008); program(s) used to refine structure: *SHELXL97* (Sheldrick, 2008); molecular graphics: *SHELXTL* (Sheldrick, 2008) and *PLATON* (Spek, 2003); software used to prepare material for publication: *SHELXTL*.

This research work was supported financially by the Department of Science and Technology of Jiangsu Province (BE200830457) and the '863' project (2007AA02Z211) of the Ministry of Science and Technology of P. R. China.

Supplementary data and figures for this paper are available from the IUCr electronic archives (Reference: HK2564).

References

- Allen, F. H., Kennard, O., Watson, D. G., Brammer, L., Orpen, A. G. & Taylor, R. (1987). *J. Chem. Soc. Perkin Trans. 2*, pp. S1–19.
 Dixon, E. A., Fischer, A. & Robinson, F. P. (1981). *Can. J. Chem.* **59**, 2629–2641.
 Enraf–Nonius (1989). *CAD-4 Software*. Enraf–Nonius, Delft, The Netherlands.
 Grummitt, O. & Buck, A. C. (1943). *J. Am. Chem. Soc.* **65**, 295–296.
 Harms, K. & Wocadlo, S. (1995). *XCAD4*. University of Marburg, Germany.
 Merritt, C. & Braun, C. E. (1950). *Org. Synth.* **30**, 1–2.
 North, A. C. T., Phillips, D. C. & Mathews, F. S. (1968). *Acta Cryst.* **A24**, 351–359.
 Sheldrick, G. M. (2008). *Acta Cryst.* **A64**, 112–122.
 Spek, A. L. (2003). *J. Appl. Cryst.* **36**, 7–13.

supplementary materials

Acta Cryst. (2008). E64, o2307 [doi:10.1107/S1600536808035812]

1-(4-Methyl-1-naphthyl)ethanone

Y.-H. Hu, X.-L. Zhao, W.-G. Yang, J.-F. Yao and X.-T. Lu

Comment

The title compound is a dye and plastic processing aid of intermediate, 1,4-naphthalenedicarboxylic acid. As part of our ongoing studies in this area, we report herein its crystal structure.

In the title compound (Fig. 1), the bond lengths (Allen *et al.*, 1987) and angles are within normal ranges. Rings A (C3-C8) and B (C1-C3/C8-C10) are, of course, planar and the dihedral angle between them is $A/B = 2.90(3)^\circ$. The intramolecular C-H \cdots O hydrogen bond (Table 1) results in the formation of a nonplanar six-membered ring C (C2-C4/C12/O/H2A) adopting envelope conformation with O atom displaced by $-0.533(3)$ Å from the plane of the other ring atoms.

In the crystal structure, intermolecular C-H \cdots O hydrogen bonds (Table 1) link the molecules (Fig. 2), in which they may be effective in the stabilization of the structure.

Experimental

In a three-necked flask, naphthalene (256.0 g, 2.00 mol), paraformaldehyde (110.0 g, 1.22 mol), glacial acetic acid (260 ml), concentrated hydrochloric acid (362 ml) and phosphoric acid (165 ml, 85%) are heated with efficient stirring in a water bath at 353-358 K for 6 h. The product is washed two times with cold water (1 liter), a solution of potassium carbonate (20.0 g) in cold water (500 ml), and finally with cold water (500 ml). Ether (200 ml) is added to the oil layer and the solution is given a preliminary drying with anhydrous potassium carbonate (10.0 g) for 1 h. The lower aqueous layer is separated and the ether solution again dried with potassium carbonate (20.0 g) for 8-10 h. The ether solution is distilled first at atmospheric pressure to remove the ether, and then followed by distillation under reduced pressure to obtain 1-chloromethylnaphthalene. In a three-necked flask, magnesium (63.2 g), absolute ether (100 ml), a crystal of iodine, a solution of 1-chloromethylnaphthalene (150.0 g, 0.85 mol) in absolute ether (750 ml) and absolute ether (1080 ml) are mixed, and the ether solution of the chloride is added to the mixture in 5 h, and then stirred and heated at reflux for an additional 1 h to obtain 1-methylnaphthalene. The yield was 88-92% (Grummitt & Buck, 1943). Acetyl chloride (39.3 g, 0.48 mol, 38 ml) is added over 45 min to a stirred mixture of 1-methylnaphthalene (Aldrich) (67.0 g, 0.48 mol), dry dichloromethane (340 ml) and finely ground anhydrous aluminium chloride (76.0 g, 0.57 mol) at 273 K. After the addition is completed, the mixture is stirred at ambient temperature for 4 h, and then heated under reflux for 2.5 h (Dixon *et al.*, 1981). The reaction solution is washed with hydrochloric acid many times. The aqueous phase followed by distillation under reduced pressure gave the title compound (yield; 71%) (Merritt & Braun, 1950). Crystals suitable for X-ray analysis are obtained by slow evaporation of an petroleum ether solution.

Refinement

H atoms were positioned geometrically, with C-H = 0.93 and 0.96 Å for aromatic and methyl H, respectively, and constrained to ride on their parent atoms with $U_{\text{iso}}(\text{H}) = xU_{\text{eq}}(\text{C})$, where $x = 1.5$ for methyl H and $x = 1.2$ for aromatic H atoms.

Figures

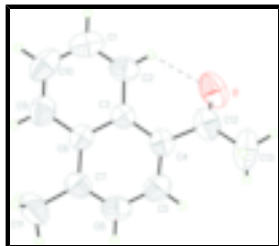


Fig. 1. The molecular structure of the title molecule, with the atom- numbering scheme. Dis- placement ellipsoids are drawn at the 30% probability level. Hydrogen bond is shown as dashed line.

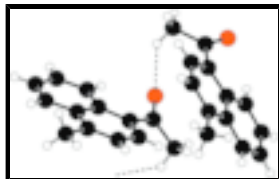


Fig. 2. A partial packing diagram. Hydrogen bonds are shown as dashed lines.

1-(4-Methyl-1-naphthyl)ethanone

Crystal data

$C_{13}H_{12}O$

$M_r = 184.23$

Orthorhombic, *Pbca*

Hall symbol: -P 2ac 2ab

$a = 15.449 (3) \text{ \AA}$

$b = 7.8290 (16) \text{ \AA}$

$c = 16.755 (3) \text{ \AA}$

$V = 2026.5 (7) \text{ \AA}^3$

$Z = 8$

$F_{000} = 784$

$D_x = 1.208 \text{ Mg m}^{-3}$

Mo $K\alpha$ radiation

$\lambda = 0.71073 \text{ \AA}$

Cell parameters from 25 reflections

$\theta = 9\text{--}13^\circ$

$\mu = 0.08 \text{ mm}^{-1}$

$T = 294 (2) \text{ K}$

Block, colorless

$0.30 \times 0.20 \times 0.10 \text{ mm}$

Data collection

Enraf-Nonius CAD-4
diffractometer

Radiation source: fine-focus sealed tube

Monochromator: graphite

$T = 294(2) \text{ K}$

$\omega/2\theta$ scans

Absorption correction: ψ scan
(North *et al.*, 1968)

$T_{\min} = 0.978$, $T_{\max} = 0.993$

1932 measured reflections

1846 independent reflections

905 reflections with $I > 2\sigma(I)$

$R_{\text{int}} = 0.0000$

$\theta_{\max} = 25.3^\circ$

$\theta_{\min} = 2.4^\circ$

$h = 0 \rightarrow 18$

$k = 0 \rightarrow 9$

$l = 0 \rightarrow 20$

3 standard reflections

every 120 min

intensity decay: none

Refinement

| | |
|--|--|
| Refinement on F^2 | Secondary atom site location: difference Fourier map |
| Least-squares matrix: full | Hydrogen site location: inferred from neighbouring sites |
| $R[F^2 > 2\sigma(F^2)] = 0.059$ | H-atom parameters constrained |
| $wR(F^2) = 0.155$ | $w = 1/[\sigma^2(F_o^2) + (0.05P)^2 + 0.8P]$ |
| $S = 1.01$ | where $P = (F_o^2 + 2F_c^2)/3$ |
| 1846 reflections | $(\Delta/\sigma)_{\max} < 0.001$ |
| 127 parameters | $\Delta\rho_{\max} = 0.14 \text{ e } \text{\AA}^{-3}$ |
| Primary atom site location: structure-invariant direct methods | $\Delta\rho_{\min} = -0.16 \text{ e } \text{\AA}^{-3}$ |
| | Extinction correction: none |

Special details

Geometry. All e.s.d.'s (except the e.s.d. in the dihedral angle between two l.s. planes) are estimated using the full covariance matrix. The cell e.s.d.'s are taken into account individually in the estimation of e.s.d.'s in distances, angles and torsion angles; correlations between e.s.d.'s in cell parameters are only used when they are defined by crystal symmetry. An approximate (isotropic) treatment of cell e.s.d.'s is used for estimating e.s.d.'s involving l.s. planes.

Refinement. Refinement of F^2 against ALL reflections. The weighted R -factor wR and goodness of fit S are based on F^2 , conventional R -factors R are based on F , with F set to zero for negative F^2 . The threshold expression of $F^2 > \sigma(F^2)$ is used only for calculating R -factors(gt) *etc.* and is not relevant to the choice of reflections for refinement. R -factors based on F^2 are statistically about twice as large as those based on F , and R -factors based on ALL data will be even larger.

Fractional atomic coordinates and isotropic or equivalent isotropic displacement parameters (\AA^2)

| | x | y | z | $U_{\text{iso}}^*/U_{\text{eq}}$ |
|------|--------------|-------------|--------------|----------------------------------|
| O | 0.72633 (18) | -0.0605 (3) | 0.52877 (14) | 0.1022 (9) |
| C1 | 0.4927 (2) | 0.1819 (5) | 0.5918 (2) | 0.0830 (11) |
| H1A | 0.4590 | 0.1827 | 0.5457 | 0.100* |
| C2 | 0.5750 (2) | 0.1221 (4) | 0.58895 (18) | 0.0665 (9) |
| H2A | 0.5973 | 0.0829 | 0.5407 | 0.080* |
| C3 | 0.62766 (19) | 0.1181 (3) | 0.65824 (17) | 0.0498 (7) |
| C4 | 0.7163 (2) | 0.0658 (3) | 0.65707 (18) | 0.0573 (8) |
| C5 | 0.7619 (2) | 0.0651 (4) | 0.7276 (2) | 0.0679 (9) |
| H5A | 0.8198 | 0.0326 | 0.7272 | 0.082* |
| C6 | 0.7234 (2) | 0.1121 (4) | 0.79985 (19) | 0.0710 (10) |
| H6A | 0.7554 | 0.1034 | 0.8467 | 0.085* |
| C7 | 0.6410 (2) | 0.1698 (4) | 0.80342 (17) | 0.0611 (8) |
| C8 | 0.59134 (18) | 0.1753 (3) | 0.73121 (18) | 0.0531 (7) |
| C9 | 0.5063 (2) | 0.2390 (5) | 0.7314 (2) | 0.0731 (10) |
| H9A | 0.4825 | 0.2794 | 0.7787 | 0.088* |
| C10 | 0.4583 (2) | 0.2424 (4) | 0.6633 (3) | 0.0829 (11) |
| H10A | 0.4022 | 0.2854 | 0.6645 | 0.100* |
| C11 | 0.6043 (3) | 0.2281 (5) | 0.88156 (17) | 0.0941 (13) |

supplementary materials

| | | | | |
|------|------------|------------|------------|-------------|
| H11A | 0.6474 | 0.2163 | 0.9225 | 0.141* |
| H11B | 0.5548 | 0.1597 | 0.8948 | 0.141* |
| H11C | 0.5873 | 0.3457 | 0.8775 | 0.141* |
| C12 | 0.7628 (3) | 0.0157 (4) | 0.5827 (2) | 0.0733 (10) |
| C13 | 0.8571 (2) | 0.0651 (4) | 0.5755 (2) | 0.0961 (13) |
| H13A | 0.8794 | 0.0259 | 0.5253 | 0.144* |
| H13B | 0.8893 | 0.0137 | 0.6183 | 0.144* |
| H13C | 0.8625 | 0.1871 | 0.5786 | 0.144* |

Atomic displacement parameters (\AA^2)

| | U^{11} | U^{22} | U^{33} | U^{12} | U^{13} | U^{23} |
|-----|-------------|-------------|-------------|--------------|--------------|--------------|
| O | 0.127 (2) | 0.098 (2) | 0.0814 (16) | -0.0038 (18) | 0.0255 (17) | -0.0239 (15) |
| C1 | 0.081 (3) | 0.079 (3) | 0.090 (3) | -0.011 (2) | -0.028 (2) | 0.017 (2) |
| C2 | 0.078 (2) | 0.061 (2) | 0.061 (2) | -0.0079 (19) | -0.0101 (18) | 0.0077 (16) |
| C3 | 0.0557 (18) | 0.0421 (16) | 0.0516 (16) | -0.0036 (14) | 0.0025 (15) | 0.0035 (14) |
| C4 | 0.066 (2) | 0.0455 (17) | 0.0601 (18) | -0.0005 (16) | 0.0093 (18) | 0.0039 (15) |
| C5 | 0.063 (2) | 0.060 (2) | 0.081 (2) | 0.0066 (17) | -0.005 (2) | 0.0095 (18) |
| C6 | 0.079 (3) | 0.074 (2) | 0.061 (2) | 0.000 (2) | -0.0125 (18) | 0.0105 (17) |
| C7 | 0.073 (2) | 0.0565 (19) | 0.0535 (18) | -0.0008 (18) | 0.0024 (18) | 0.0037 (15) |
| C8 | 0.0516 (18) | 0.0464 (16) | 0.0614 (18) | -0.0009 (15) | 0.0018 (16) | 0.0054 (14) |
| C9 | 0.066 (2) | 0.074 (2) | 0.079 (2) | 0.005 (2) | 0.010 (2) | 0.0109 (19) |
| C10 | 0.053 (2) | 0.072 (2) | 0.124 (3) | -0.0011 (19) | 0.000 (2) | 0.021 (2) |
| C11 | 0.122 (3) | 0.101 (3) | 0.059 (2) | 0.013 (3) | 0.011 (2) | -0.004 (2) |
| C12 | 0.095 (3) | 0.0495 (19) | 0.076 (2) | 0.0060 (19) | 0.021 (2) | 0.0012 (18) |
| C13 | 0.079 (3) | 0.081 (3) | 0.128 (3) | 0.007 (2) | 0.046 (2) | 0.004 (2) |

Geometric parameters (\AA , $^\circ$)

| | | | |
|------------|-----------|------------|-----------|
| O—C12 | 1.220 (4) | C7—C8 | 1.434 (4) |
| C1—C2 | 1.357 (4) | C7—C11 | 1.498 (4) |
| C1—C10 | 1.394 (5) | C8—C9 | 1.405 (4) |
| C1—H1A | 0.9300 | C9—C10 | 1.360 (4) |
| C2—C3 | 1.418 (4) | C9—H9A | 0.9300 |
| C2—H2A | 0.9300 | C10—H10A | 0.9300 |
| C3—C8 | 1.418 (4) | C11—H11A | 0.9600 |
| C3—C4 | 1.430 (4) | C11—H11B | 0.9600 |
| C4—C5 | 1.376 (4) | C11—H11C | 0.9600 |
| C4—C12 | 1.491 (4) | C12—C13 | 1.513 (5) |
| C5—C6 | 1.398 (4) | C13—H13A | 0.9600 |
| C5—H5A | 0.9300 | C13—H13B | 0.9600 |
| C6—C7 | 1.352 (4) | C13—H13C | 0.9600 |
| C6—H6A | 0.9300 | | |
| C2—C1—C10 | 120.3 (3) | C3—C8—C7 | 120.4 (3) |
| C2—C1—H1A | 119.9 | C10—C9—C8 | 121.0 (3) |
| C10—C1—H1A | 119.9 | C10—C9—H9A | 119.5 |
| C1—C2—C3 | 121.1 (3) | C8—C9—H9A | 119.5 |
| C1—C2—H2A | 119.4 | C9—C10—C1 | 120.5 (3) |

| | | | |
|--------------|------------|---------------|------------|
| C3—C2—H2A | 119.4 | C9—C10—H10A | 119.8 |
| C8—C3—C2 | 118.2 (3) | C1—C10—H10A | 119.8 |
| C8—C3—C4 | 118.8 (3) | C7—C11—H11A | 109.5 |
| C2—C3—C4 | 123.0 (3) | C7—C11—H11B | 109.5 |
| C5—C4—C3 | 118.7 (3) | H11A—C11—H11B | 109.5 |
| C5—C4—C12 | 118.1 (3) | C7—C11—H11C | 109.5 |
| C3—C4—C12 | 123.2 (3) | H11A—C11—H11C | 109.5 |
| C4—C5—C6 | 121.7 (3) | H11B—C11—H11C | 109.5 |
| C4—C5—H5A | 119.2 | O—C12—C4 | 121.7 (3) |
| C6—C5—H5A | 119.2 | O—C12—C13 | 120.8 (3) |
| C7—C6—C5 | 121.8 (3) | C4—C12—C13 | 117.5 (3) |
| C7—C6—H6A | 119.1 | C12—C13—H13A | 109.5 |
| C5—C6—H6A | 119.1 | C12—C13—H13B | 109.5 |
| C6—C7—C8 | 118.5 (3) | H13A—C13—H13B | 109.5 |
| C6—C7—C11 | 119.8 (3) | C12—C13—H13C | 109.5 |
| C8—C7—C11 | 121.7 (3) | H13A—C13—H13C | 109.5 |
| C9—C8—C3 | 118.9 (3) | H13B—C13—H13C | 109.5 |
| C9—C8—C7 | 120.6 (3) | | |
| C10—C1—C2—C3 | 0.5 (5) | C2—C3—C8—C7 | 178.4 (3) |
| C1—C2—C3—C8 | 1.3 (4) | C4—C3—C8—C7 | -4.1 (4) |
| C1—C2—C3—C4 | -176.1 (3) | C6—C7—C8—C9 | -178.1 (3) |
| C8—C3—C4—C5 | 3.1 (4) | C11—C7—C8—C9 | 1.1 (5) |
| C2—C3—C4—C5 | -179.6 (3) | C6—C7—C8—C3 | 1.2 (4) |
| C8—C3—C4—C12 | -175.4 (3) | C11—C7—C8—C3 | -179.5 (3) |
| C2—C3—C4—C12 | 2.0 (4) | C3—C8—C9—C10 | 1.6 (5) |
| C3—C4—C5—C6 | 0.8 (5) | C7—C8—C9—C10 | -179.1 (3) |
| C12—C4—C5—C6 | 179.3 (3) | C8—C9—C10—C1 | 0.2 (5) |
| C4—C5—C6—C7 | -3.9 (5) | C2—C1—C10—C9 | -1.3 (5) |
| C5—C6—C7—C8 | 2.7 (5) | C5—C4—C12—O | 146.1 (3) |
| C5—C6—C7—C11 | -176.5 (3) | C3—C4—C12—O | -35.4 (5) |
| C2—C3—C8—C9 | -2.3 (4) | C5—C4—C12—C13 | -34.8 (4) |
| C4—C3—C8—C9 | 175.2 (3) | C3—C4—C12—C13 | 143.7 (3) |

Hydrogen-bond geometry (Å, °)

| <i>D</i> —H \cdots <i>A</i> | <i>D</i> —H | H \cdots <i>A</i> | <i>D</i> \cdots <i>A</i> | <i>D</i> —H \cdots <i>A</i> |
|----------------------------------|-------------|---------------------|----------------------------|-------------------------------|
| C2—H2A \cdots O | 0.93 | 2.30 | 2.920 (4) | 124 |
| C13—H13C \cdots O ⁱ | 0.96 | 2.55 | 3.296 (4) | 135 |

Symmetry codes: (i) $-x+3/2, y+1/2, z$.

Fig. 1

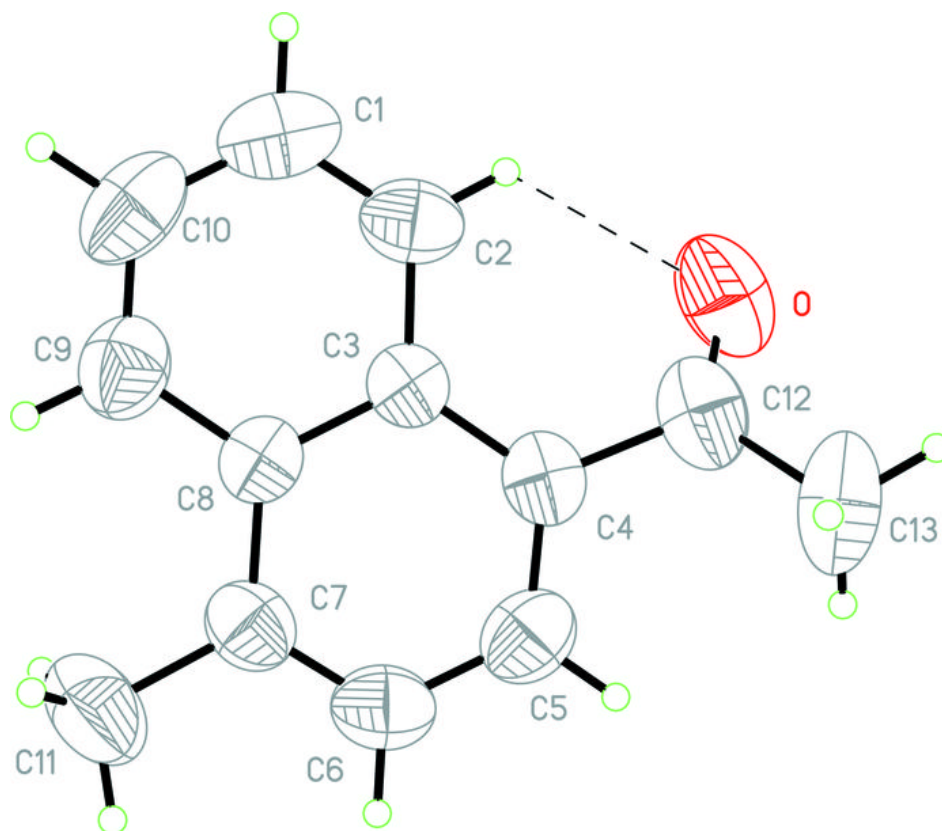


Fig. 2

